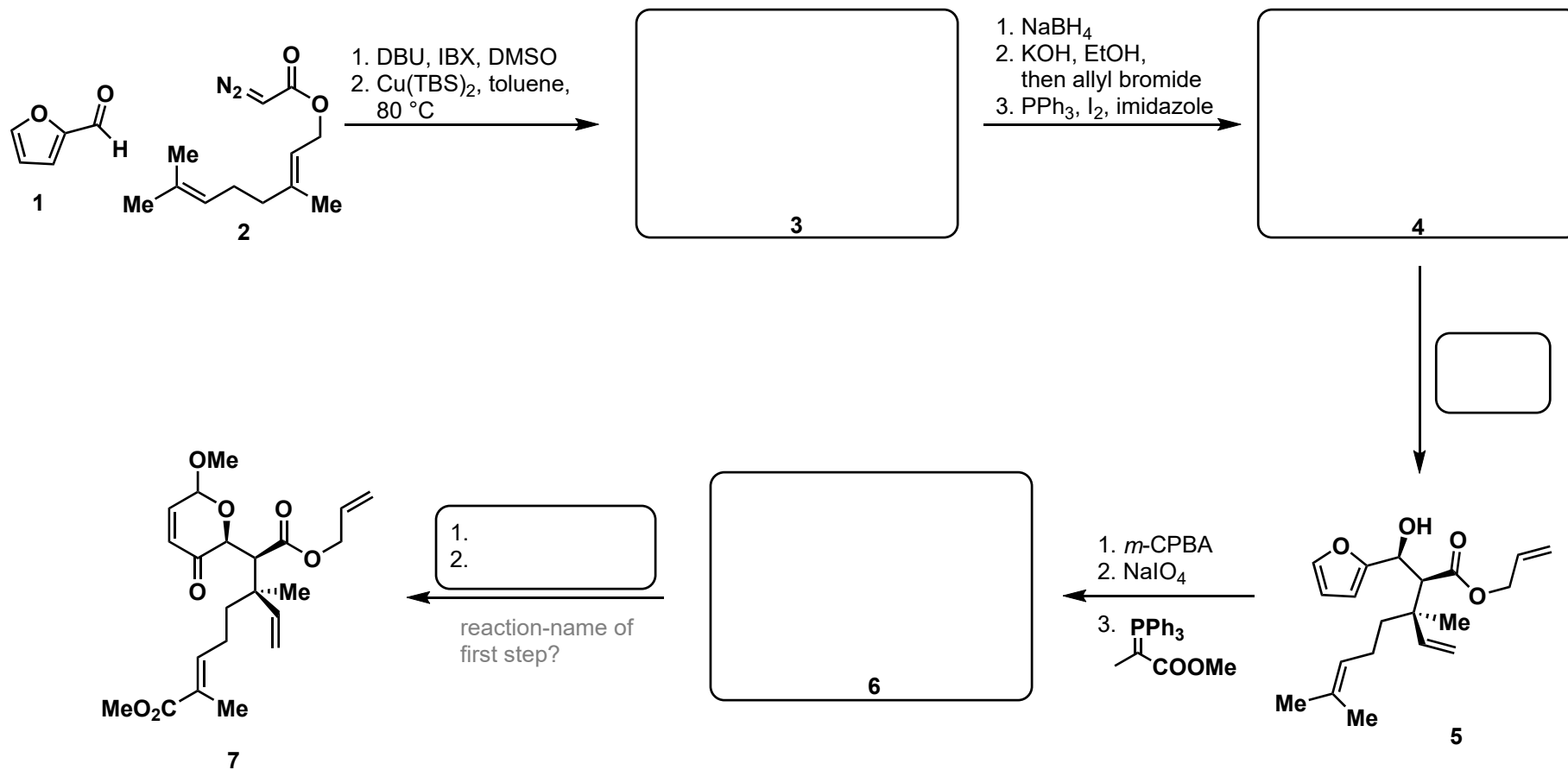
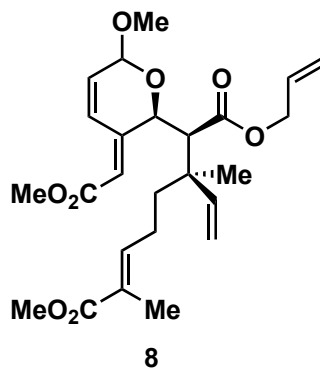
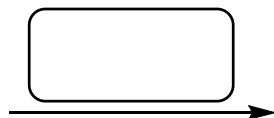
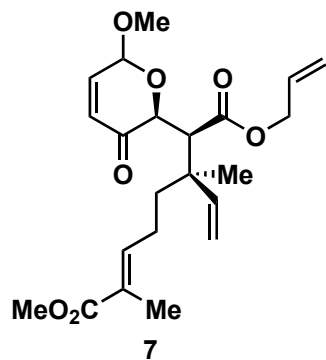


A Biomimetic Total Synthesis of (±)-Basiliolide B

X. Liang, L. Zhou, L. Min, W. Ye, W. Bao, W. Ma, Q. Yang, F. Qiao, X. Zhang, and C.-S. Lee

Angew. Chem. Int. Ed. **2014**, *53*, 11294–11297.



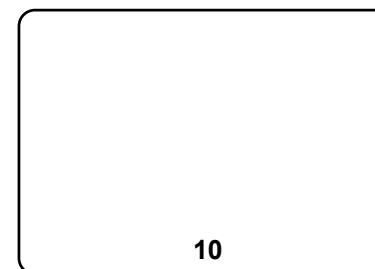
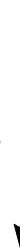


1. $\text{Na}_2\text{Cr}_2\text{O}_7$, H_2SO_4 , acetone
2. DABCO, toluene, 70°C



explain the diastereoselectivity

120°C , toluene, sealed tube, 3-5 days



- 1.
- 2.

